

VIVIENDA

SUPERFICIES (aproximadas)
AREAS (approximates)

SUPERFICIE CERRADA VIVIENDA

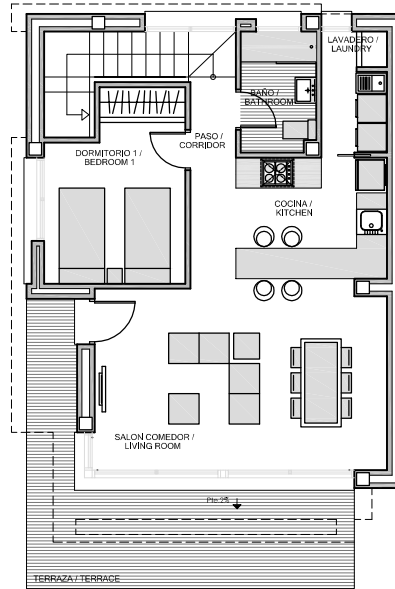
CLOSE AREA HOUSE	115,92 m2
TERRAZA / TERRACE	25,92 m2
ESCALERA_s/ STAIR	4,50 m2
SOLARIUM	49,00 m2
TOTAL	195,34 m2

SUPERFICIES OCUPABLES (aproximadas)
OCCUPIABLE AREA (approximates)

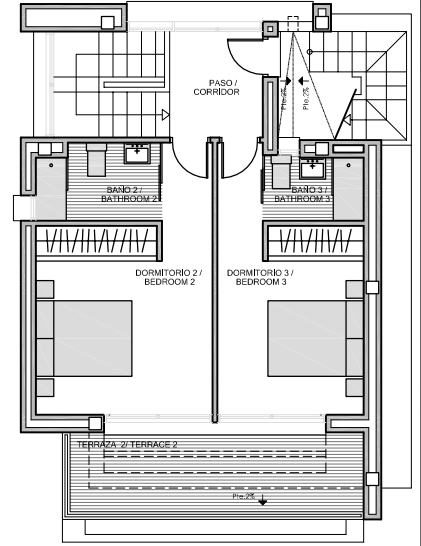
SALON COMEDOR / LIVING ROOM	28,67m2
DORMITORIO 1 / BEDROOM 1	9,70m2
PASO 1	3,60m2
BAÑO 1 / BATHROOM 1	3,55m2
LAVADERO / LAUNDRY	3,12m2
ESCALERA / STAIR	5,97m2
DORMITORIO 2 / BEDROOM 2	14,70m2
BAÑO 2 / BATHROOM 2	3,64m2
DORMITORIO 3 / BEDROOM 3	12,30m2
BAÑO 3 / BATHROOM 3	2,50m2
PASO / CORRIDOR	3,90m2
TERRAZA / TERRACE	25,92m2
ESCALERA_s/ STAIR	4,50 m2
SOLARIUM	49,00m2
TOTAL	171,07 m2

BASEMENT 83,03m2

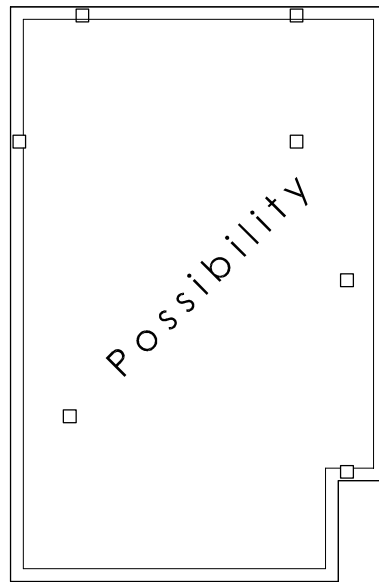
Planta Baja/Ground floor



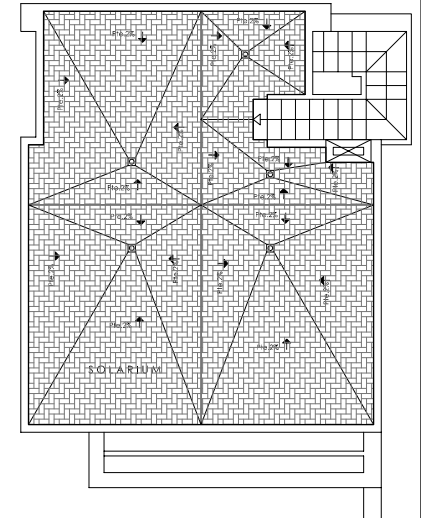
Planta Primera/First floor



Planta Sótano/Basement



Solarium



1m 2m 3m 4m 5m

