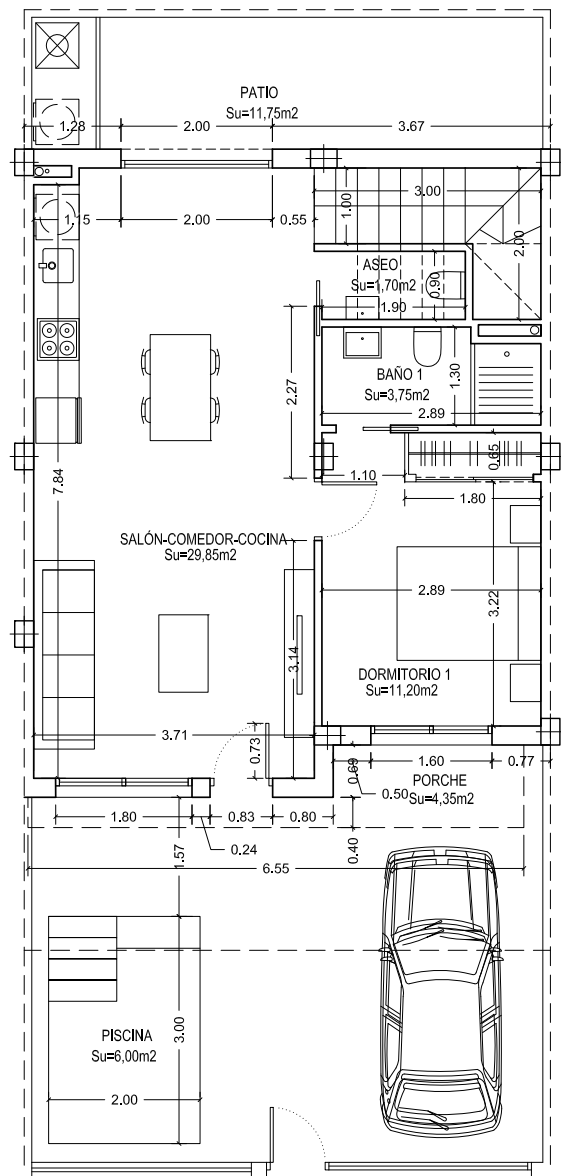
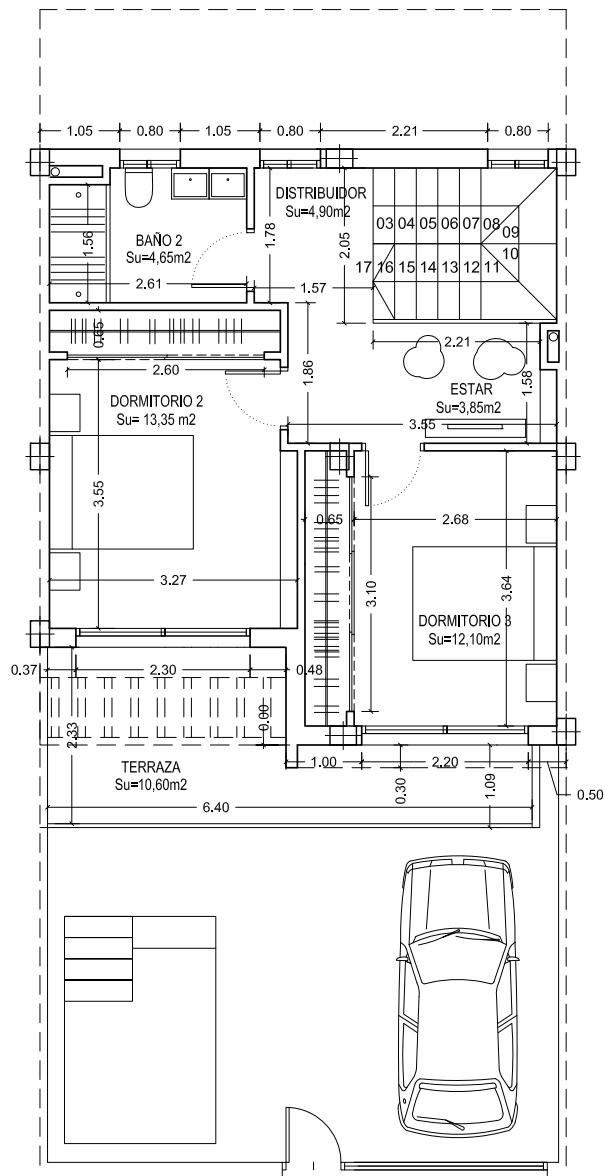




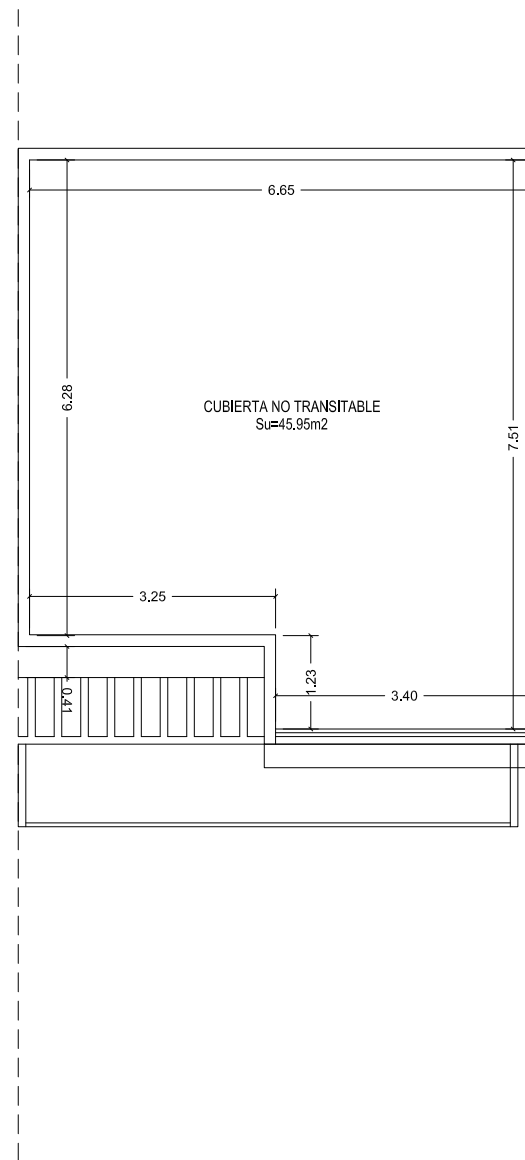
PLANTA BAJA

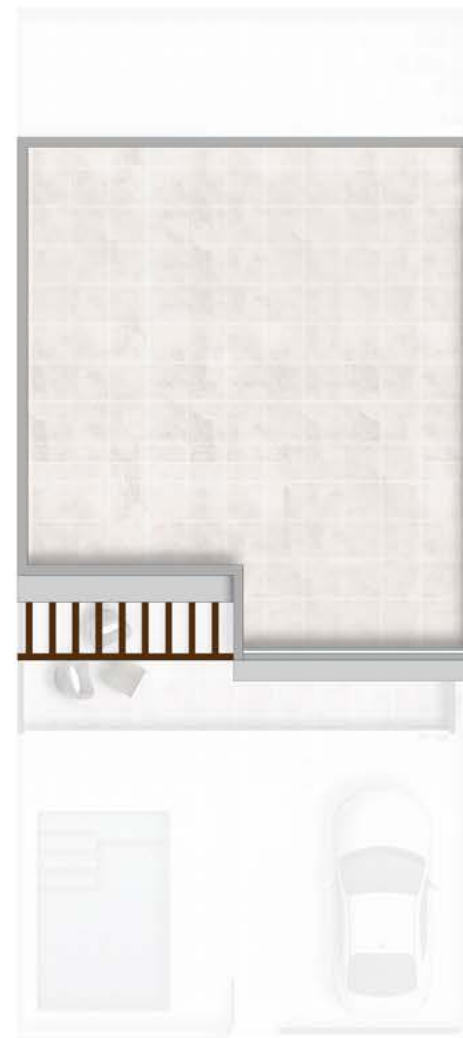


PLANTA PRIMERA



SOLARIUM





Planta	Uso	Sup.útil	Sup.const.
baja	vivienda	46.50 m ²	57.51 m ²
primera	vivienda	38.85 m ²	50.50 m ²
Total		85.35 m²	108.01 m²
	Jardín.....	34.50 m ²	
	Piscina.....	6.00 m ²	
	Terraza.....	11.00 m ²	
	Patio.....	11.75 m ²	